

CPSLE

Highly Configurable Lab Exhaust Solution



CPSLE is the “multi-tool” of lab exhaust fans. This one economical lab fan can be configured in a wide variety of ways to meet the demanding requirements of your lab!

Configurable Options

- ▶ Side Intake
- ▶ Bottom Intake with “No Loss” inlet box
- ▶ Curb or Rail Mount
- ▶ Variable Discharge Nozzle
- ▶ With or Without Stack
- ▶ Backward Inclined (CPSLE) or Airfoil Wheel (CPSALE)

**Rail-Mount
Side Intake**



Curb Mount with No Loss Inlet Box

Rail Mount Standard Features:

- ▶ 17 Sizes from 60 - 365
- ▶ Phenolic Epoxy Coating
- ▶ Up to 40,000 CFM & up to 8” SP
- ▶ Stainless Hardware
- ▶ Drain Fitting
- ▶ AMCA Air and Sound Certified
- ▶ 125 MPH Wind Rated Without Guy Wires

Curb Mounted Standard Features:

- ▶ 13 Sizes from 60 - 245
- ▶ Phenolic Epoxy Coating
- ▶ Up to 14,200 CFM & up to 5.5” SP
- ▶ Stainless Hardware
- ▶ Drain Fitting
- ▶ AMCA Air and Sound Certified
- ▶ 125 MPH Wind Rated Without Guy Wires

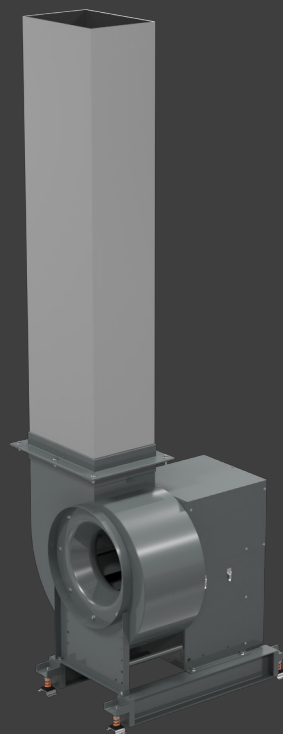


Contact your Cook representative or visit lorencook.com for more information!

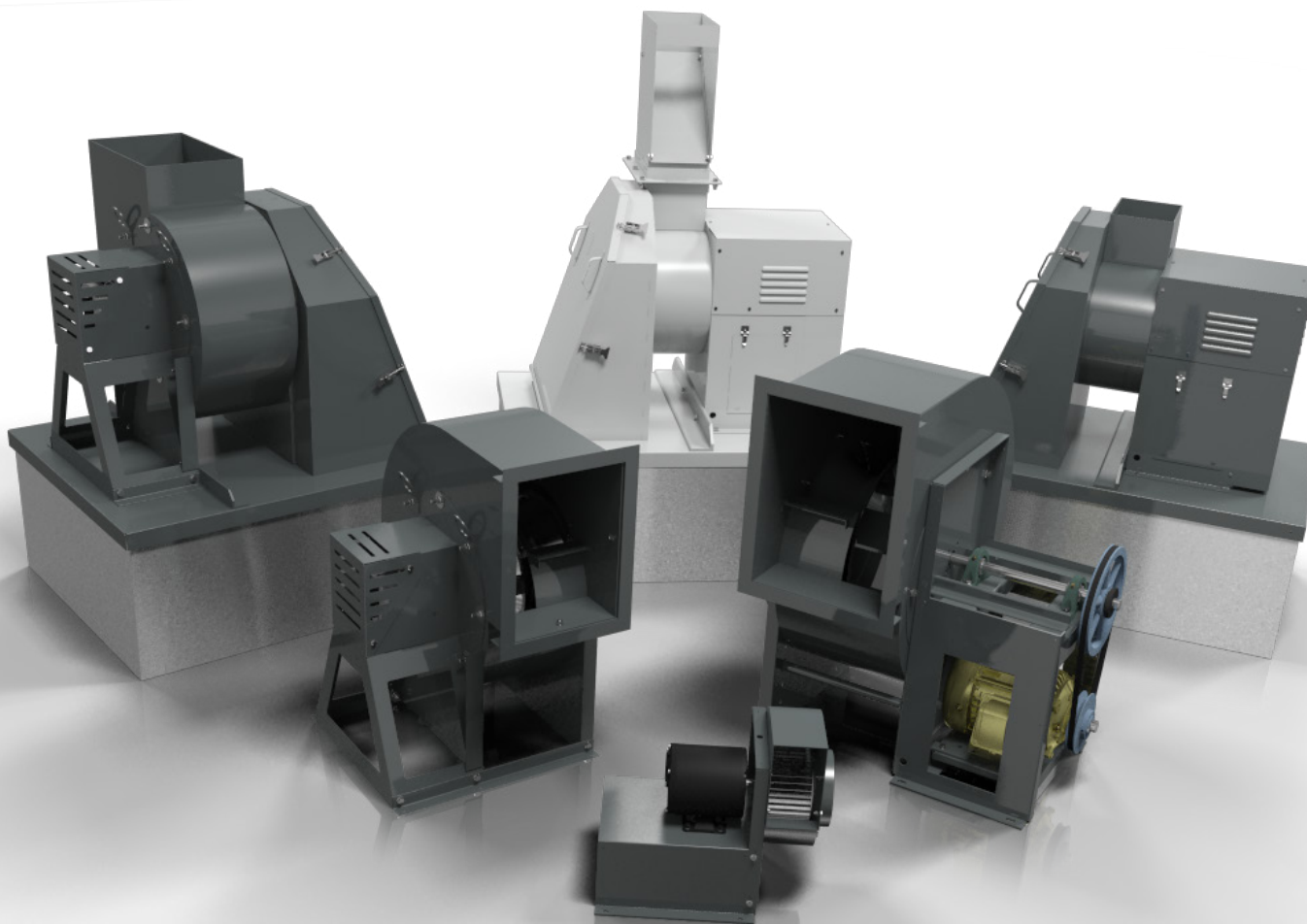
Stacks for Non-Lab Applications

Don't need epoxy phenolic coating or stainless steel hardware, but want to get the air up and away? Check out CPV/CPS/CPA with stacks!

Available up to size 365.



CP's are available in many different configurations to fit your systems needs!



Contact your Cook representative or visit lorencook.com for more information!
2015 E. Dale St. Springfield, MO 65803 | 417-869-6474 | lorencook.com

October 2018
B50100-001