

UL 762 LISTED FOR RESTAURANT EXHAUST



Cook products with a UL 762 listing are designed to eject contaminated or grease-laden air. These products are UL listed to operate continuously at elevated temperatures and continue operation during grease flare-up. All of these units are intended for installation in accordance with the National Fire Protection Association (NFPA) Standard 96: Standard for Ventilation Control and Fire Protection of Commercial Cooking Operations.

UL LISTED TO OPERATE CONTINUOUSLY AT 300°F

- ▶ VCR/VCR-HP/VCR-XP/VCRD/VCRD-HP/VCRD-XP
- ▶ Lo-Pro (requires upblast diverters)
- ▶ CPV/CPA/CPA-A
- ▶ QMX/QMX-HP/QMX-XP/QMXU/QMXU-HP/QMXU-XP/QMXLE/QMXLE-HP
- ▶ CIC

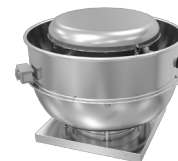
CPV, CPA, CPA-A, QMX, QMX-HP, QMX-XP and CIC must be ordered with drain and access door to comply with UL requirements. Weather covers are required for outdoor applications. When airstream temperatures are expected to exceed 180°F, high temperature accessories may be required.

UL LISTED TO OPERATE CONTINUOUSLY AT 500°F

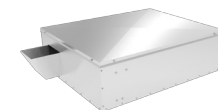
- ▶ CPS/CPS-A
- ▶ CF/CA-SWSI Arrangement 1, 9 and 10
- ▶ CF-4/CA-4 SWSI Arrangement 1 and 2
- ▶ QMX/QMX-HP/QMX-XP Arrangement 9
- ▶ CIC

These Cook products must be ordered with drain and access door to comply with UL requirements. Weather covers are required for outdoor applications. When airstream temperatures are expected to exceed 180°F, high temperature accessories may be required.

LISTING AVAILABLE FOR:



VCR/VCR-HP/VCR-XP/
VCRD/VCRD-HP/
VCRD-XP



Lo-Pro
(shown with
upblast diverters)



QMX/QMX-HP/
QMX-XP



QMXLE/QMXLE-HP



CIC



QMXU/QMXU-HP/
QMXU-XP

GREASE COLLECTION OPTIONS

GREASE TERMINATOR 2

- ▶ Grease-capture and containment system
- ▶ Uses the same material that oil companies use to clean catastrophic oil spills on the ocean
- ▶ Lasts about 30 to 45 days between replacements



GREASE TROUGH

- ▶ Constructed of continuously welded .064 aluminum
- ▶ Includes a pan, lid and mounting hardware
- ▶ Both the curb and non-curb mounted versions feature a baffled design for extended capacity
- ▶ The lid and pan are removable for easy cleaning

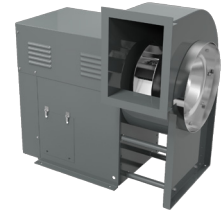


Curb Mounted Version

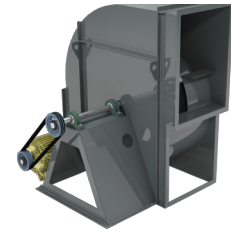


Non-Curb Mounted
'Hanging' Version

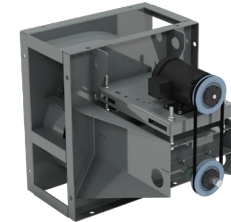
LISTING AVAILABLE FOR:



CPV / CPS / CPA / CPS-A / CPA-A
Shown with weather cover



CA / CF



CA-4 / CF-4



2015 E. Dale St. Springfield, MO 65803 | 417-869-6474 | Fax: 417-862-3820 | lorencook.com | UL for Restaurant Exhaust Flier

June 2017 | B50081-002