



This publication contains supplemental instructions for *H-Series Lifting Lugs*.

**Carefully read this publication and any supplemental documents prior to any installation or maintenance procedure.**

## Installation

1. Verify that all of the following parts have been shipped:

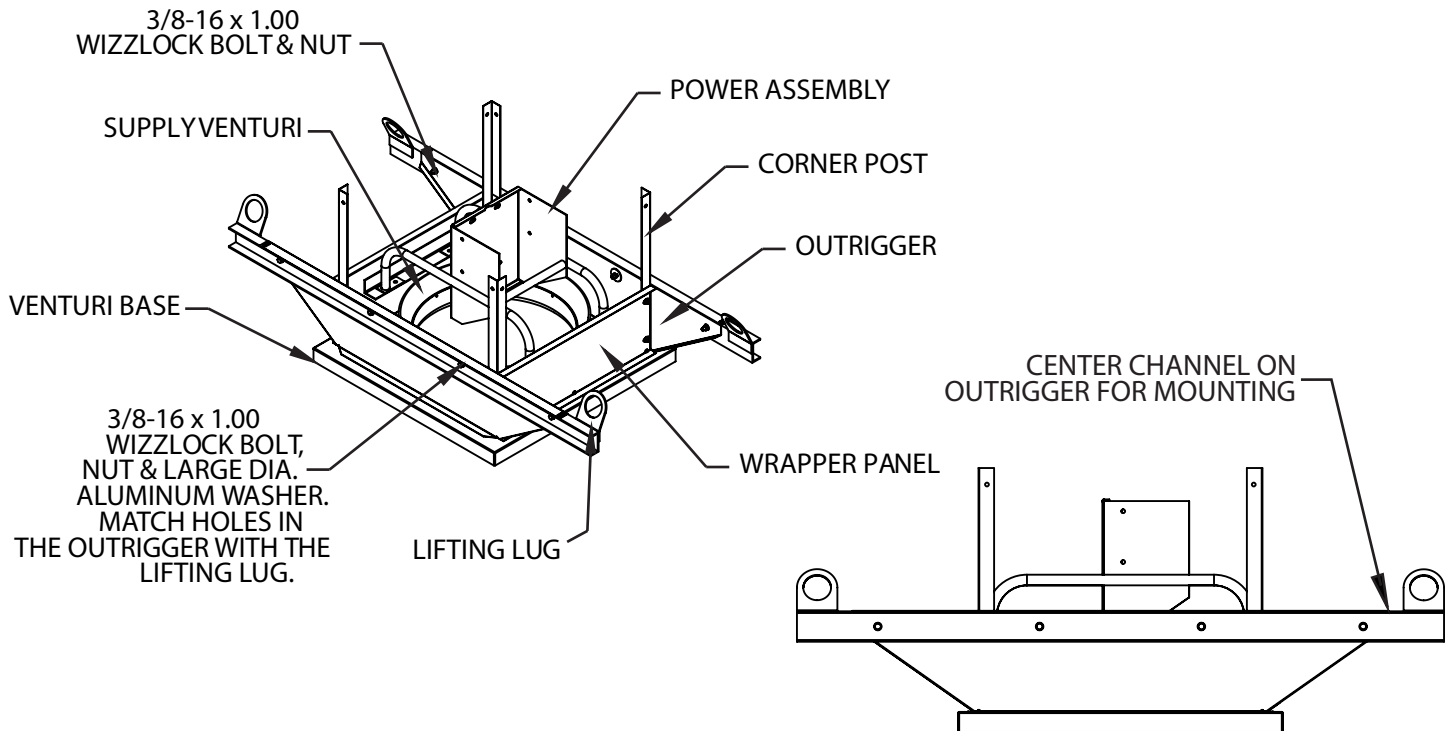
- Lifting lugs (2)
- 3/8-16 x 1 wizz bolts and nuts:

Unit Size	Quantity
20-24F, 30	8
30F, 36-36F, 42	12
42F, 48	14
48F-60	16
60F-72	20

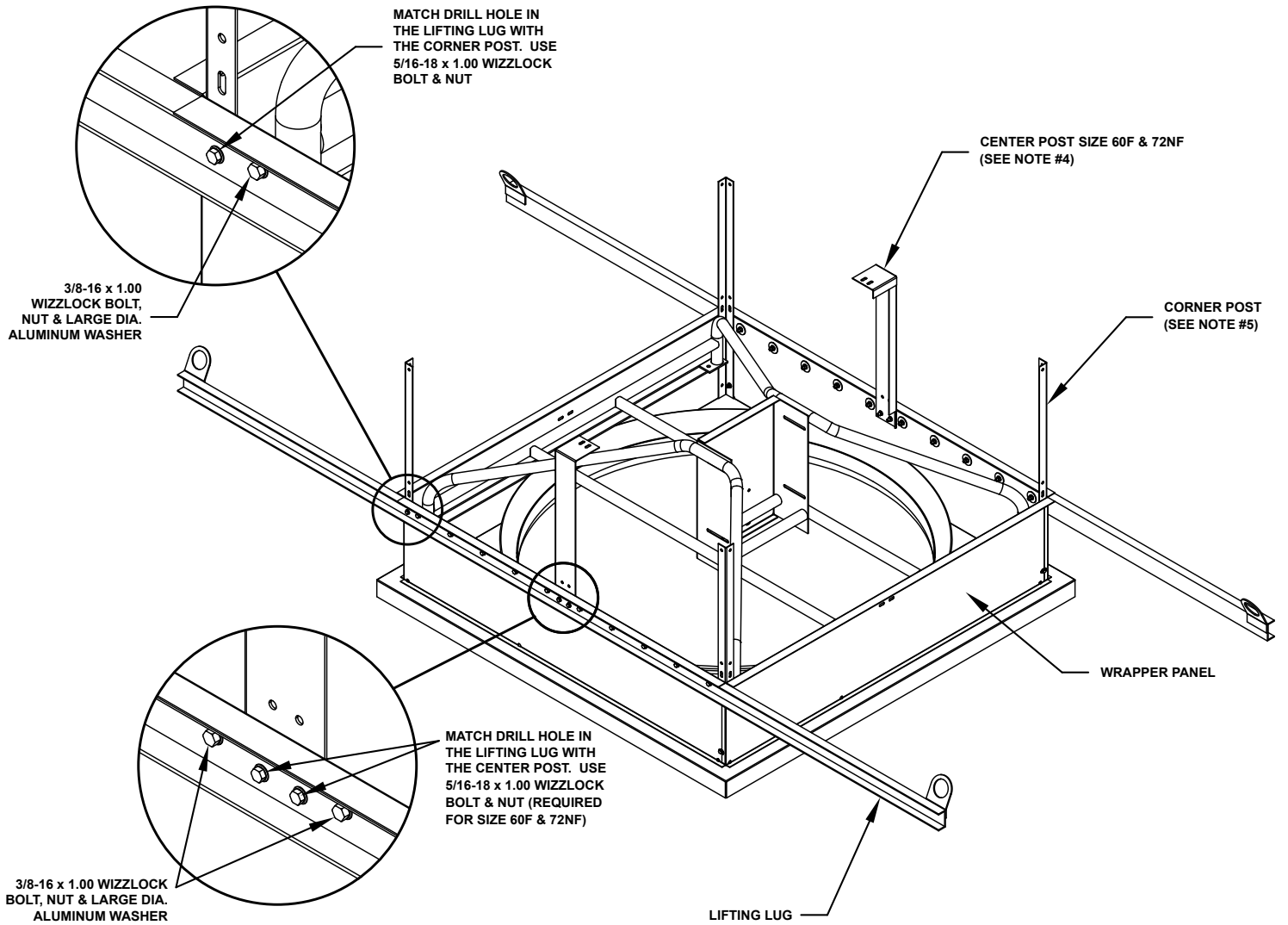
2. Take the lifting lugs and line up with the matching predrilled holes in the wrapper panel.
3. Fasten the parts together using all supplied bolts and nuts.
4. On sizes 54-72 & 48F-60F, the center post hardware will need to be removed to mount the lifting lug. After mounting the lifting lug reassemble the center post with the hardware provided.
5. The hardware used to secure the corner post will need to be removed when mounting the lifting lug. After mounting the lifting lug, reassemble the corner post with the hardware provided.
6. Use all 4 lifting points for secure and balanced lifting. Check for frayed lifting straps and replace if needed.

**NOTE:** Only one set of H-series lifting lugs is provided on an order with multiple units of the same size. The lifting lugs can be left on the final unit or removed if desired.

**Sizes: 20 - 48NF, 20F - 42F**



Sizes: 54 - 72NF, 48F - 60F



# LOREN COOK COMPANY

CORPORATE OFFICES: 2015 E. DALE ST. SPRINGFIELD, MO 65803

Phone: 417-869-6474 | Fax: 417-862-3820 | [lorencook.com](http://lorencook.com)