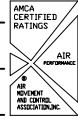




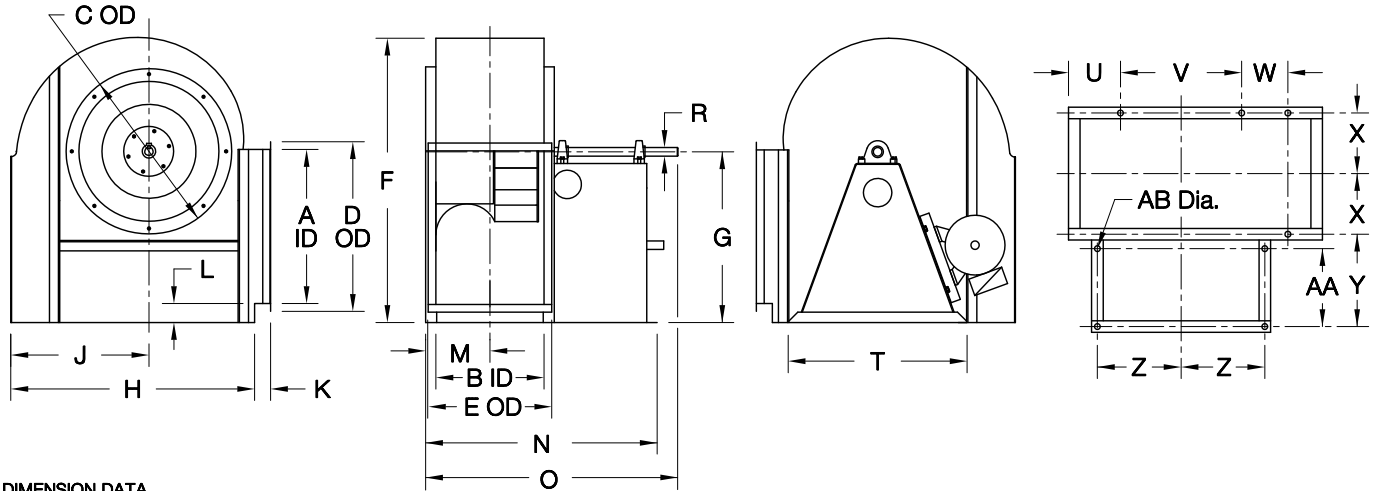
COOK

CF SWSI

DATE: _____
 PROJECT: _____
 LOCATION: _____



**Flat Blade Centrifugal Blower
 Clockwise Bottom Horizontal
 Arrangement 1* & 9**



DIMENSION DATA

| Size | A | B | C | D | E | F | G | H | J | K | L | M | N | O |
|------|----------|----------|----------|----------|----------|-----------|----|--------|----------|-------|---------|----------|----------|-----------|
| 120 | 13-1/8 | 9-3/16 | 16-1/8 | 16-5/16 | 12-3/8 | 25-3/4 | 16 | 21-1/2 | 12-3/8 | 3-1/4 | 2-15/16 | 6-5/8 | 25-1/4 | 26-1/4 |
| 135 | 14-3/4 | 10-5/16 | 17-5/8 | 17-5/16 | 13-1/2 | 28 | 17 | 24 | 13-7/8 | 3-1/4 | 2-5/16 | 7-3/16 | 26-3/8 | 27-3/8 |
| 150 | 16-7/16 | 11-7/16 | 19-1/8 | 19-5/8 | 14-5/8 | 31-3/16 | 19 | 26 | 15-3/16 | 3-1/4 | 2-11/16 | 7-3/4 | 29-1/2 | 30-1/2 |
| 165 | 18-1/16 | 12-5/8 | 21-3/16 | 21-1/4 | 15-13/16 | 34-3/8 | 21 | 28-1/2 | 16-5/8 | 3-1/4 | 3-1/16 | 8-5/16 | 30-5/8 | 32-5/8 |
| 180 | 19-11/16 | 13-3/4 | 22-11/16 | 22-7/8 | 16-15/16 | 36-5/8 | 22 | 30-3/4 | 18-1/8 | 3-1/4 | 2-7/16 | 8-7/8 | 33-3/4 | 36-1/4 |
| 195 | 21-5/16 | 14-15/16 | 24-3/16 | 24-1/2 | 18-3/16 | 39-13/16 | 24 | 33 | 19-7/16 | 3-1/2 | 2-13/16 | 9-1/2 | 35 | 37-1/2 |
| 210 | 23 | 16-1/16 | 25-15/16 | 26-3/16 | 19-5/16 | 43-1/16 | 26 | 38 | 21 | 3-1/4 | 3-1/8 | 10-1/16 | 38-1/8 | 41-1/8 |
| 225 | 24-5/8 | 17-3/16 | 27-7/16 | 27-13/16 | 20-7/16 | 46-1/4 | 28 | 40 | 22-3/8 | 3-1/4 | 3-1/2 | 10-5/8 | 39-1/4 | 42-1/4 |
| 245 | 26-13/16 | 18-3/4 | 29-7/16 | 30 | 22 | 49-7/8 | 30 | 43 | 24-1/4 | 3-1/4 | 3-3/8 | 11-3/8 | 42-3/4 | 46-1/4 |
| 270 | 29-9/16 | 20-5/8 | 31-15/16 | 32-3/4 | 23-7/8 | 54-15/16 | 33 | 47 | 26-5/8 | 3-1/4 | 3-5/8 | 12-5/16 | 44-5/8 | 48-5/8 |
| 300 | 32-13/16 | 22-15/16 | 34-15/16 | 36 | 26-3/16 | 60-3/8 | 36 | 52 | 29-1/2 | 3-5/8 | 3-3/8 | 13-1/2 | 49 | 53-1/2 |
| 330 | 36-1/8 | 25-1/4 | 37-15/16 | 40-5/16 | 29-7/16 | 65-13/16 | 39 | 57 | 32-5/16 | 4 | 3-1/8 | 14-5/8 | 51-1/4 | 56-1/4 |
| 365 | 39-15/16 | 27-7/8 | 41-7/16 | 44-3/16 | 32-1/16 | 72-5/8 | 43 | 63 | 35-9/16 | 4-1/4 | 3-1/4 | 15-15/16 | 57-3/4 | 63-1/4 |
| 402 | 44-1/16 | 30-3/4 | 45-3/16 | 48-5/16 | 34-15/16 | 79-5/8 | 47 | 69 | 39-3/16 | 5-1/8 | 3-1/4 | 18-3/8 | 62-11/16 | 67-11/16 |
| 445 | 48-11/16 | 34 | 49-7/16 | 52-15/16 | 38-3/16 | 88-1/8 | 52 | 77 | 43-3/16 | 4-3/4 | 3-5/8 | 20 | 69-15/16 | 75-7/16 |
| 490 | 53-5/8 | 37-7/16 | 55 | 57-7/8 | 41-5/8 | 96-3/4 | 57 | 85 | 47-9/16 | 5 | 3-3/4 | 21-3/4 | 73-7/16 | 79-7/16 |
| 540 | 59-1/16 | 41-1/4 | 60 | 63-5/16 | 45-7/16 | 105-13/16 | 62 | 94 | 52-1/4 | 5 | 3-1/4 | 23-5/8 | 81-3/16 | 87-11/16 |
| 600 | 65-5/8 | 45-13/16 | 66 | 70 | 50-3/16 | 117-11/16 | 69 | 105 | 57-15/16 | 4-7/8 | 3-3/4 | 25-15/16 | 85-11/16 | 92-11/16 |
| 660 | 72-3/16 | 50-7/16 | 72 | 76-9/16 | 54-13/16 | 128-9/16 | 75 | 116 | 63-3/4 | 4-7/8 | 3-1/4 | 28-1/4 | 94-7/16 | 101-15/16 |
| 730 | 79-7/8 | 55-3/4 | 79 | 84-1/4 | 60-1/8 | 142-1/4 | 83 | 129 | 70-3/8 | 4-1/2 | 3-5/8 | 30-7/8 | 99-11/16 | 107-11/16 |

| Size | R | | | T | U | V | W | X | Y | Z | AA | AB | Max Mtr Frame | Ship Wt ** |
|------|---------|----------|-----------|--------|----------|----|-------|---------|---------|----------|--------|--------|---------------|------------|
| | Class I | Class II | Class III | | | | | | | | | | | |
| 120 | 1-3/16 | 1-7/16 | 1-11/16 | 18-3/8 | 1-5/8 | 15 | - | 5-3/4 | 12-1/8 | 8-7/16 | 9-3/4 | 11/16 | 145T | 211 |
| 135 | 1-3/16 | 1-7/16 | 1-11/16 | 19-7/8 | 1-5/8 | 17 | - | 6-5/16 | 12-1/8 | 9-3/16 | 9-3/4 | 11/16 | 145T | 266 |
| 150 | 1-3/16 | 1-7/16 | 1-11/16 | 21-3/8 | 1-13/16 | 18 | - | 6-7/8 | 14-1/8 | 9-15/16 | 11-3/4 | 11/16 | 184T | 325 |
| 165 | 1-3/16 | 1-7/16 | 1-11/16 | 23-3/8 | 1-7/8 | 20 | - | 7-7/16 | 14-1/8 | 10-15/16 | 11-3/4 | 11/16 | 184T | 387 |
| 180 | 1-7/16 | 1-11/16 | 1-11/16 | 24-7/8 | 1-5/8 | 22 | - | 8 | 16-1/8 | 11-11/16 | 13-3/4 | 11/16 | 215T | 453 |
| 195 | 1-7/16 | 1-11/16 | 1-11/16 | 26-3/8 | 2-1/16 | 23 | 6 | 8-5/8 | 16-1/8 | 12-7/16 | 13-3/4 | 11/16 | 215T | 523 |
| 210 | 1-7/16 | 1-11/16 | 1-15/16 | 28-1/8 | 5 | 24 | 7 | 9-3/16 | 18-1/8 | 13-5/16 | 15-3/4 | 13/16 | 254T | 599 |
| 225 | 1-7/16 | 1-11/16 | 1-15/16 | 29-5/8 | 5-1/8 | 25 | 7-1/2 | 9-3/4 | 18-1/8 | 14-1/16 | 15-3/4 | 13/16 | 254T | 677 |
| 245 | 1-11/16 | 1-15/16 | 2-3/16 | 31-5/8 | 5-1/4 | 27 | 8 | 10-1/2 | 20-1/8 | 15-1/16 | 17-3/4 | 13/16 | 284T | 786 |
| 270 | 1-11/16 | 1-15/16 | 2-3/16 | 34-3/8 | 5-3/8 | 30 | 9 | 11-7/16 | 20-1/8 | 16-7/16 | 17-3/4 | 13/16 | 284T | 931 |
| 300 | 1-15/16 | 2-3/16 | 2-7/16 | 37-3/8 | 6 | 33 | 10 | 12-5/8 | 22-1/8 | 17-15/16 | 19-3/4 | 13/16 | 324T | 1118 |
| 330 | 1-15/16 | 2-3/16 | 2-7/16 | 40-3/8 | 6-11/16 | 36 | 12 | 13-3/4 | 22-1/8 | 19-7/16 | 19-3/4 | 13/16 | 324T | 1320 |
| 365 | 2-3/16 | 2-7/16 | 2-15/16 | 44-7/8 | 7-7/16 | 40 | 13 | 15-1/16 | 26 | 21-11/16 | 23-3/4 | 13/16 | 326T | 1575 |
| 402 | 2-3/16 | 2-7/16 | 2-15/16 | 48-3/4 | 7-13/16 | 44 | 14 | 17-1/8 | 26-3/16 | 23-3/8 | 23-3/4 | 1-1/16 | 326T | 1858 |
| 445 | 2-7/16 | 2-15/16 | 3-7/16 | 53 | 9-13/16 | 48 | 16 | 18-3/4 | 30-3/16 | 25-1/2 | 27-3/4 | 1-1/16 | 326T | 2223 |
| 490 | 2-7/16 | 2-15/16 | 3-7/16 | 58-1/2 | 10-15/16 | 53 | 18 | 20-1/2 | 30-3/16 | 28-1/4 | 27-3/4 | 1-1/16 | 404T | 2636 |
| 540 | 2-15/16 | 3-7/16 | 3-15/16 | 63-1/2 | 12-3/4 | 58 | 20 | 22-3/8 | 34-3/16 | 30-3/4 | 31-3/4 | 1-1/16 | 404T | 3190 |
| 600 | 2-15/16 | 3-7/16 | 3-15/16 | 69-1/2 | 15-1/16 | 64 | 22 | 24-5/8 | 34-3/16 | 33-3/4 | 31-3/4 | 1-1/16 | 404T | 3852 |
| 660 | 3-7/16 | 3-15/16 | 4-7/16 | 75-1/2 | 17-1/4 | 70 | 25 | 27 | 38-3/16 | 36-3/4 | 35-3/4 | 1-1/16 | 404T | 4576 |
| 730 | 3-7/16 | 3-15/16 | 4-7/16 | 82-1/2 | 20-1/8 | 77 | 28 | 29-5/8 | 38-3/16 | 40-1/4 | 35-3/4 | 1-1/16 | 404T | 5495 |

ALL DIMENSIONS IN INCHES. WEIGHTS IN LBS., LESS MOTOR. MAXIMUM MOTOR FRAME BASED ON SINGLE SPEED ODP MOTORS (ARR. 9 ONLY).
 * ARRANGEMENT 9 SHOWN. ARRANGEMENT 1 SIMILAR BUT WITHOUT MOTOR MOUNTING PROVISION. ** BASED ON CLASS I CONSTRUCTION.