



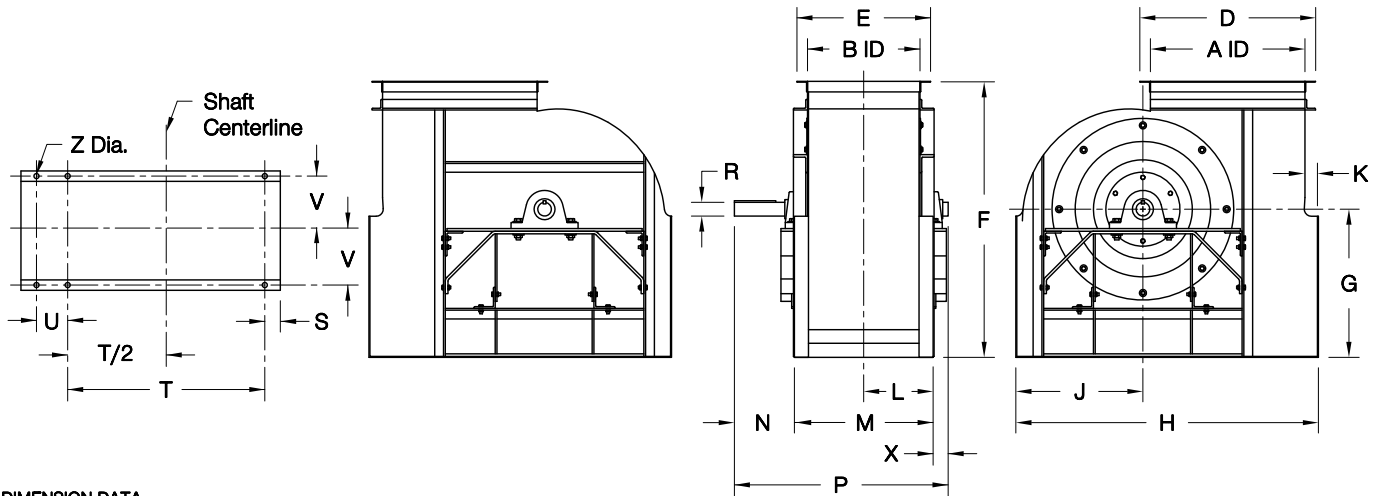
COOK

CF SWSI

DATE: _____
 PROJECT: _____
 LOCATION: _____



Flat Blade Centrifugal Blower
Clockwise Up Blast
Arrangement 3



DIMENSION DATA

| Size | A | B | D | E | F | G | H | J | K | L | M | N |
|------|----------|----------|----------|----------|-----------|----|---------|----------|---|----------|----------|----------|
| 120 | 13-1/8 | 9-3/16 | 16-5/16 | 12-3/8 | 23-3/8 | 13 | 25-3/4 | 10-11/16 | 2 | 6-5/8 | 13-3/16 | 4-5/8 |
| 135 | 14-3/4 | 10-5/16 | 17-15/16 | 13-1/2 | 25-5/8 | 14 | 28-3/4 | 12-1/16 | 2 | 7-3/16 | 14-5/16 | 4-5/8 |
| 150 | 16-7/16 | 11-7/16 | 19-5/8 | 14-5/8 | 27-15/16 | 15 | 31-5/8 | 13-5/16 | 2 | 7-3/4 | 15-7/16 | 4-5/8 |
| 165 | 18-1/16 | 12-5/8 | 21-1/4 | 15-13/16 | 31-1/4 | 17 | 34-5/8 | 14-11/16 | 2 | 8-5/16 | 16-5/8 | 5-5/8 |
| 180 | 19-11/16 | 13-3/4 | 22-7/8 | 16-15/16 | 33-1/2 | 18 | 37-1/8 | 15-9/16 | 2 | 8-7/8 | 17-3/4 | 6-1/8 |
| 195 | 21-5/16 | 14-15/16 | 24-1/2 | 18-3/16 | 36-13/16 | 20 | 40 | 16-13/16 | 2 | 9-1/2 | 18-15/16 | 6-1/8 |
| 210 | 23 | 16-1/16 | 26-3/16 | 19-5/16 | 39-1/8 | 21 | 42-7/8 | 18 | 2 | 10-1/16 | 20-1/16 | 6-5/8 |
| 225 | 24-5/8 | 17-3/16 | 27-13/16 | 20-7/16 | 42-3/8 | 23 | 45-3/4 | 19-1/4 | 2 | 10-5/8 | 21-3/16 | 6-5/8 |
| 245 | 26-13/16 | 18-3/4 | 30 | 22 | 46-1/8 | 25 | 49-1/2 | 20-7/8 | 2 | 11-3/8 | 22-3/4 | 7-5/8 |
| 270 | 29-9/16 | 20-5/8 | 32-3/4 | 23-7/8 | 50-1/4 | 27 | 54-3/4 | 23-3/8 | 2 | 12-5/16 | 24-5/8 | 8-1/8 |
| 300 | 32-13/16 | 22-15/16 | 36 | 26-3/16 | 55-7/8 | 30 | 60 | 25-3/8 | 2 | 13-1/2 | 26-15/16 | 8-5/8 |
| 330 | 36-1/8 | 25-1/4 | 40-5/16 | 29-7/16 | 61-3/8 | 33 | 65-3/4 | 27-7/8 | 2 | 14-5/8 | 29-1/4 | 9-1/8 |
| 365 | 39-15/16 | 27-7/8 | 44-3/16 | 32-1/16 | 67-7/16 | 36 | 72-3/8 | 30-5/8 | 2 | 15-15/16 | 31-7/8 | 9-5/8 |
| 402 | 44-1/16 | 30-3/4 | 48-5/16 | 34-15/16 | 74-11/16 | 40 | 80-3/8 | 33-5/8 | 3 | 18-3/8 | 36-3/4 | 9-3/16 |
| 445 | 48-11/16 | 34 | 52-15/16 | 38-3/16 | 82-5/16 | 44 | 88-1/2 | 37-1/8 | 3 | 20 | 40 | 9-11/16 |
| 490 | 53-5/8 | 37-7/16 | 57-7/8 | 41-5/8 | 90-3/16 | 48 | 97 | 40-3/4 | 3 | 21-3/4 | 43-7/16 | 10-11/16 |
| 540 | 59-1/16 | 41-1/4 | 63-5/16 | 45-7/16 | 99-1/2 | 53 | 106-5/8 | 44-7/8 | 3 | 23-5/8 | 47-1/4 | 12-3/16 |
| 600 | 65-5/8 | 45-13/16 | 70 | 50-3/16 | 110-11/16 | 59 | 118 | 49-3/4 | 3 | 25-15/16 | 51-13/16 | 12-3/4 |
| 660 | 72-3/16 | 50-7/16 | 76-9/16 | 54-13/16 | 121-7/8 | 65 | 129-3/8 | 54-5/8 | 3 | 28-1/4 | 56-7/16 | 14-1/4 |
| 730 | 79-7/8 | 55-3/4 | 84-1/4 | 60-1/8 | 134-7/8 | 72 | 142-5/8 | 60-1/4 | 3 | 30-7/8 | 61-3/4 | 14-3/4 |

| Size | P | R | | | S | T | U | V | X | Z | Ship. Wt. * |
|------|----------|---------|----------|-----------|--------|----|----|---------|---------|--------|-------------|
| | | Class I | Class II | Class III | | | | | | | |
| 120 | 19-7/16 | 1 | 1 | 1-3/16 | 3-3/16 | 15 | - | 5-3/4 | 1-5/8 | 11/16 | 157 |
| 135 | 20-9/16 | 1 | 1 | 1-3/16 | 3-9/16 | 17 | - | 6-5/16 | 1-5/8 | 11/16 | 195 |
| 150 | 21-11/16 | 1 | 1 | 1-3/16 | 4-5/16 | 18 | - | 6-7/8 | 1-5/8 | 11/16 | 236 |
| 165 | 23-7/8 | 1 | 1 | 1-7/16 | 4-7/16 | 20 | - | 7-7/16 | 1-5/8 | 11/16 | 280 |
| 180 | 25-1/2 | 1-3/16 | 1-7/16 | 1-11/16 | 4-9/16 | 22 | - | 8 | 1-5/8 | 11/16 | 328 |
| 195 | 26-11/16 | 1-7/16 | 1-7/16 | 1-11/16 | 5-5/16 | 23 | 9 | 8-5/8 | 1-5/8 | 11/16 | 379 |
| 210 | 28-5/16 | 1-7/16 | 1-7/16 | 1-11/16 | 6 | 24 | 10 | 9-3/16 | 1-5/8 | 13/16 | 437 |
| 225 | 29-7/16 | 1-7/16 | 1-7/16 | 1-11/16 | 6-3/4 | 25 | 10 | 9-3/4 | 1-5/8 | 13/16 | 496 |
| 245 | 32-1/2 | 1-7/16 | 1-11/16 | 1-15/16 | 7-3/8 | 27 | 11 | 10-1/2 | 2-1/8 | 13/16 | 579 |
| 270 | 34-7/8 | 1-7/16 | 1-11/16 | 1-15/16 | 8-3/8 | 30 | 12 | 11-7/16 | 2-1/8 | 13/16 | 690 |
| 300 | 37-11/16 | 1-11/16 | 1-15/16 | 2-3/16 | 8-7/8 | 33 | 14 | 12-5/8 | 2-1/8 | 13/16 | 836 |
| 330 | 40-1/2 | 1-11/16 | 2-3/16 | 2-3/16 | 9-7/8 | 36 | 16 | 13-3/4 | 2-1/8 | 13/16 | 994 |
| 365 | 43-5/8 | 1-15/16 | 2-7/16 | 2-7/16 | 10-5/8 | 40 | 17 | 15-1/16 | 2-1/8 | 13/16 | 1193 |
| 402 | 47-1/8 | 1-15/16 | 2-7/16 | 2-11/16 | 11-5/8 | 44 | 20 | 17-1/8 | 1-3/16 | 1-1/16 | 1415 |
| 445 | 50-7/8 | 1-15/16 | 2-11/16 | 2-15/16 | 13-1/8 | 48 | 23 | 18-3/4 | 1-3/16 | 1-1/16 | 1702 |
| 490 | 55-13/16 | 2-3/16 | 2-11/16 | 2-15/16 | 14-1/4 | 53 | 26 | 20-1/2 | 1-11/16 | 1-1/16 | 2028 |
| 540 | 62-1/8 | 2-7/16 | 2-15/16 | 3-7/16 | 15-7/8 | 58 | 29 | 22-3/8 | 2-11/16 | 1-1/16 | 2475 |
| 600 | 67-5/16 | 2-11/16 | 3-7/16 | 3-15/16 | 17-3/4 | 64 | 32 | 24-5/8 | 2-3/4 | 1-1/16 | 2997 |
| 660 | 74-7/16 | 3-7/16 | 3-15/16 | 4-7/16 | 19-5/8 | 70 | 36 | 27 | 3-3/4 | 1-1/16 | 3565 |
| 730 | 80-1/4 | 3-7/16 | 3-15/16 | 4-7/16 | 21-3/4 | 77 | 40 | 29-5/8 | 3-3/4 | 1-1/16 | 4282 |

ALL DIMENSIONS IN INCHES. WEIGHTS IN LBS., LESS MOTOR. * BASED ON CLASS I CONSTRUCTION.

CF405R02