



COOK

TCNHBLE

DATE: _____

PROJECT: _____

LOCATION: _____



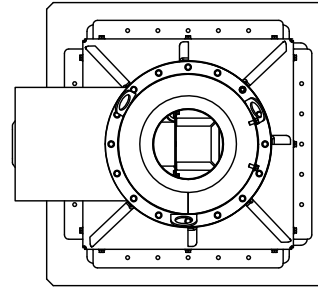
Tubular Centrifugal Inline Upblast Roof Mounted Arrangement 9

STANDARD CONSTRUCTION FEATURES:

FAN: Lifting Lugs - Fan Drain - Access Door (Bolted) - Phenolic Epoxy Powder With UV (Light Gray) - Weather Cover - Stainless Steel Shaft - Shaft Seal - Stainless Steel Hardware - Stainless Steel Lube Lines - L10-80K Concentric Lock Bearings - AMCA B - 1.5 Service Factor Drives. Designed to withstand 125 mph wind*.

OPTIONAL CONSTRUCTION FEATURES:

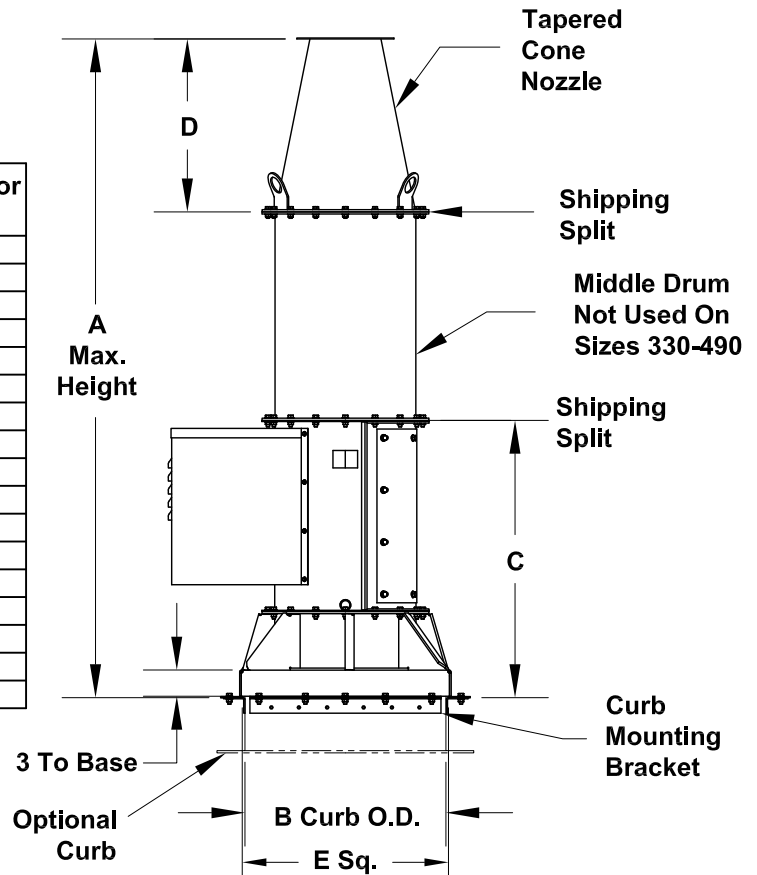
FAN: Disconnect Switch (Prewired and Mounted, excluding explosion proof) - L-10-200K Bearing Life Upgrade - AMCA A Spark Construction - Alternate Coatings - Isolation Damper, Shipped Loose (Gravity, Electric, and Pneumatic) - 2.0 Service Factor Drives.



DIMENSION DATA

Size	A	B	C	D	E	Ship Wt.	Max Motor Frame
100	120	23-1/16	32	20	24	317	145T
120	120	27-1/16	33	22	28	385	184T
135	120	29	34	26	30	443	184T
150	120	31	36-1/2	29	32	511	184T
165	120	33	38	30	34	571	184T
180	120	36-7/8	40-1/2	35	38	636	213T
195	120	40-7/8	43	39	42	709	213T
210	120	42-7/8	43-1/2	42	44	778	213T
225	120	46-7/8	45	44	48	973	213T
245	120	48-7/8	50-1/2	50	50	1056	215T
270	120	52-7/8	56	56	54	1175	215T
300	122	58-7/8	57-1/2	60	60	1375	254T
330	125-1/4	60-3/4	61-1/2	64	62	1542	254T
365	128-1/4	63-3/4	63-1/2	65	65	1752	256T
402	140-3/4	70-3/4	69	72	72	2055	256T
445	155-1/4	75-3/4	75-1/2	80	77	2470	326T
490	168-3/4	82-3/4	82	87	84	2839	326T

ALL DIMENSIONS IN INCHES. WEIGHTS IN LBS., LESS MOTOR.



NOT INTENDED TO BE SUPPORTED BY TRADITIONAL SHEETMETAL ROOF CURB, BUT BY INTEGRAL MEMBERS OF ROOF STRUCTURE. * ACTUAL WINDLOAD DEPENDENT ON ATTACHMENT TO ROOF STRUCTURE.