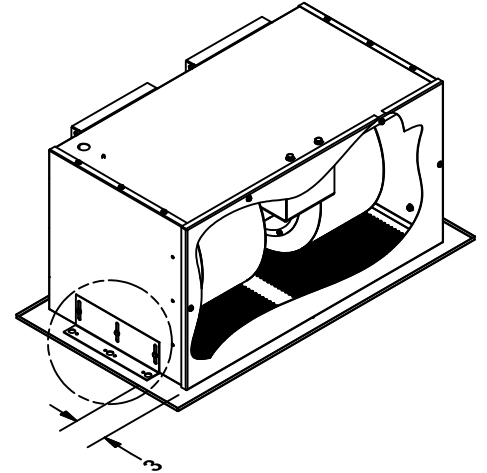
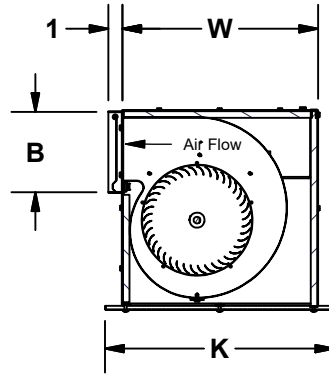
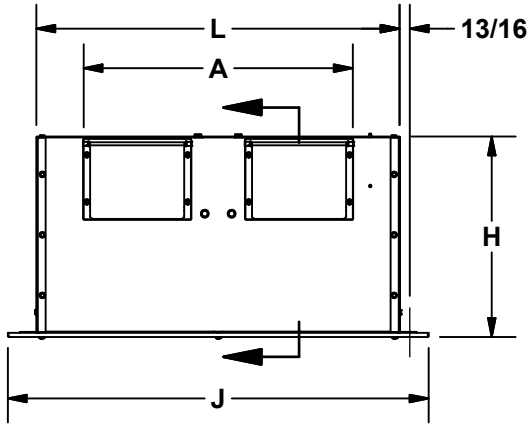


MARK: _____
 PROJECT: _____
 DATE: _____

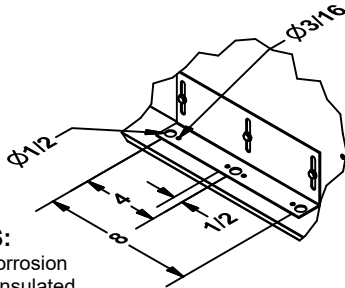


Ceiling and Wall Blowers 800 - 900 Series



CATALOG NUMBER DEFINITION:

GC - 800
 Fan Size
 Model: GC = Gemini (Ceiling Mount)



Mounting
Bracket
Detail

STANDARD CONSTRUCTION FEATURES:

Twin forward curved galvanized steel fan wheels - Corrosion resistant galvanized steel fan housing - Acoustically insulated housing - Aluminum backdraft damper with solid aluminum hinge rod mounted in nylon bushings - Permanently lubricated motor with built-in thermal overload protection and disconnect plug - Interchangeable panels with removable fasteners allows the intake to be easily changed - Internal wiring box with disconnect receptacle - Powder-painted white steel grille.

ACCESSORIES

1. FAN SPEED CONTROL (2 Speed & Remote)
2. ROOF JACK
3. ROOF CAP
4. WALL CAP
5. EAVE ELBOW
6. FILTER
7. BRICK VENT
8. CEILING RADIATION DAMPER
9. HANGING VIBRATION ISOLATOR
10. TIME DELAY SWITCH
11. 277 VOLT TRANSFORMER
12. FILTER

DIMENSION DATA

Fan Size GC-	DIM L	DIM W	DIM H	DIM A	DIM B	Std Grille Dim J	Std Grille Dim K	Deluxe Alum Grille Dim J	Deluxe Alum Grille Dim K	Ship Wt.
800	27	14 11/16	14 11/16	20	6	31 3/8	17 1/8	28 3/4	16 1/4	74
900	31	14 11/16	14 11/16	24 1/4	6	35 1/8	17 1/8	32 3/4	16 1/4	86

ALL DIMENSIONS IN INCHES. WEIGHTS IN LBS.

QTY	MARK	CATALOG NUMBER (see above)	FAN INFORMATION			MOTOR INFORMATION					ACCESSORIES							
			CFM	SP	RPM	HP	VOLTS	HZ	PH	TYPE								

MOTOR TYPE: ODP (Open Drip Proof); TENV (Totally Enclosed Non-Ventilating).