

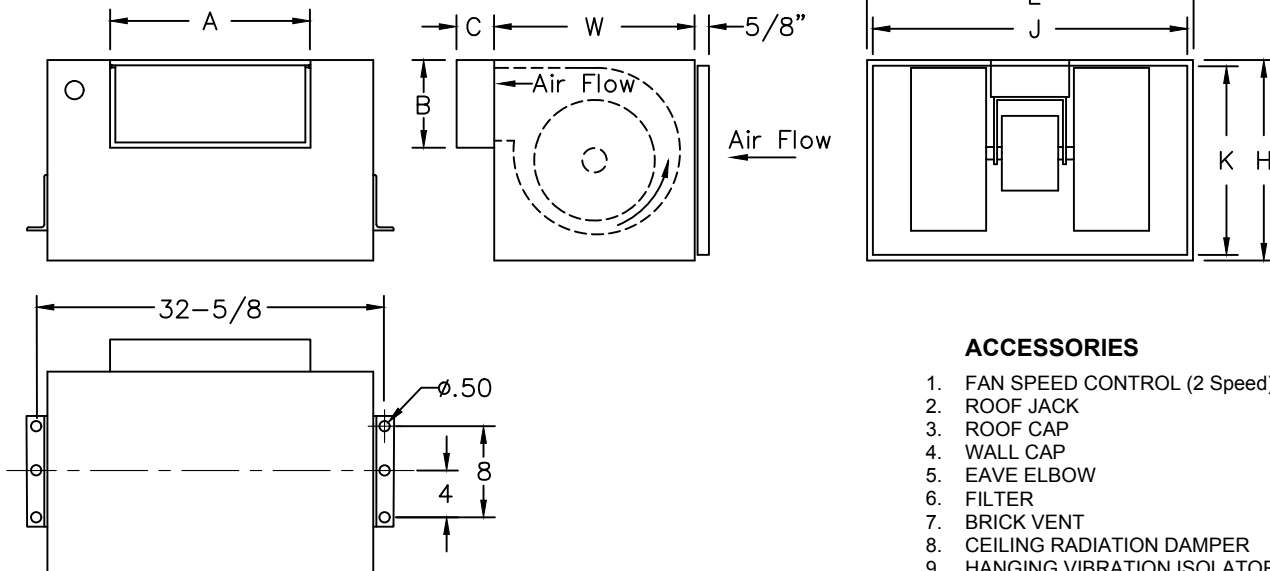
DATE: _____

PROJECT: _____

LOCATION: _____



Inline Blowers
900 Series
Vari-Flow®



ACCESSORIES

1. FAN SPEED CONTROL (2 Speed)
2. ROOF JACK
3. ROOF CAP
4. WALL CAP
5. EAVE ELBOW
6. FILTER
7. BRICK VENT
8. CEILING RADIATION DAMPER
9. HANGING VIBRATION ISOLATOR
10. TIME DELAY SWITCH
11. 277 VOLT TRANSFORMER
12. ROOF CURB
13. AIR BALANCE KIT
14. UNIVERSAL CONTROLLER
15. REMOTE SPEED CONTROLLER
16. PRESSURE CONTROLLER

DIMENSION DATA

Series	Housing			Outlet			Inlet Collar		Unit Wt.
	L	W	H	A	B	C	J	K	
900	31	14-11/16	14-11/16	24-1/4	6	1	31	14-1/2	86

ALL DIMENSIONS IN INCHES. WEIGHTS IN LBS.

STANDARD CONSTRUCTION FEATURES:

Forward curved galvanized steel fan wheels - Corrosion resistant galvanized steel fan housing - Acoustically insulated housing - Aluminum backdraft damper with solid aluminum hinge rod mounted in brass bushings - Permanently lubricated electronically commutated variable speed motor with built-in electronic overload protection and disconnect plug - Interchangeable panels with removable fasteners allows the discharge to be easily changed - Internal wiring box with disconnect receptacle.

CATALOG NUMBER DEFINITION:

GNVF - 900
 └─ Series: 900
 └─ TYPE: GN = Inline (includes Inlet Collar)
 VF = VariFlow® (EC Motor)

QTY	MARK	CATALOG NUMBER (see above)	FAN INFORMATION			MOTOR INFORMATION					ACCESSORIES								
			CFM	SP	RPM	HP	VOLTS	HZ	PH	TYPE									

MOTOR TYPE: EC (ELECTRONICALLY COMMUTATED)

GM031R00