



COOK

HLC-D

DATE: _____

PROJECT: _____

LOCATION: _____

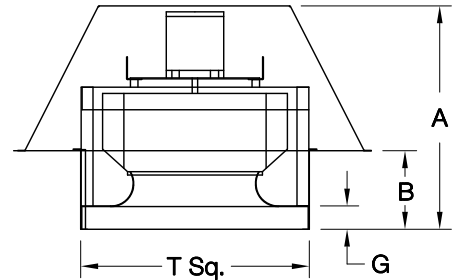
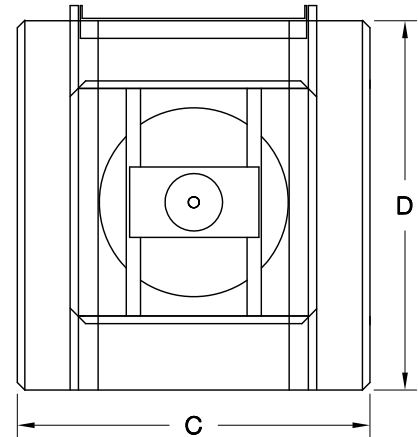


Hooded Low-Contour Downblast Centrifugal Exhaust Ventilator Roof Mounted/Direct Drive

DIMENSION DATA

Size	A	B	C	D	G	T Sq.	Ship Wt.	Roof Opening Sq.*
70	16-1/2	4-1/4	31-1/4	34-1/8	2	18	70	13-1/2
90	17	4-3/4	31-1/4	34-1/8	2	18	85	13-1/2
100	17	4-3/4	31-1/4	34-1/8	2	18	85	13-1/2
120	19-5/8	5-7/8	34-3/4	35-1/8	2	20	165	15-1/2
135	19-7/8	6-1/8	34-3/4	35-1/8	2	20	165	15-1/2
150	21-1/4	7-1/4	40-1/8	42-1/8	2	24	190	19-1/2
165	21-3/8	7-3/8	40-1/8	42-1/8	2	24	190	19-1/2
180	26-1/4	8-1/4	43-7/8	47-1/8	3	30	220	25-1/2

ALL DIMENSIONS IN INCHES. WEIGHTS IN LBS.
* ROOF OPENING SIZE FOR CURBS SUPPLIED BY COOK ONLY.



ACCESSORIES

1. DISCONNECT SWITCH
2. FAN SPEED CONTROL
3. GRAVITY BACKDRAFT DAMPER
4. MOTORIZED BACKDRAFT DAMPER
5. RCG GALVANIZED CURB
6. RCA ALUMINUM CURB
7. EPOXY COATING
8. ANTI-CONDENSATE COATING
9. LESS BIRDSCREEN
10. SPECIAL

STANDARD CONSTRUCTION FEATURES:

All aluminum housing – Backward inclined all aluminum wheel – Welded curb cap corners – Hinged access hood – Birdscreen – Vibration isolators – Permanently lubricated ball bearing motors – Corrosion resistant fasteners.

QTY	MARK	CATALOG NUMBER	FAN INFORMATION			MOTOR INFORMATION					ACCESSORIES							
			CFM	SP	RPM	HP	VOLTS	HZ	PH	TYPE								

MOTOR TYPE: ODP (OPEN DRIP-PROOF); 2 SP (2 SPEED); X-PRF (EXPLOSION PROOF); TEFC (TOTALLY ENCLOSED FAN COOLED).

LC002R01