



COOK

TLC-D

DATE: _____

PROJECT: _____

LOCATION: _____



Tiered Low-Contour Downblast Centrifugal Exhaust Ventilator Roof Mounted/Direct Drive

DIMENSION DATA

Size	A	B	C	D	G	T Sq.	Ship Wt.	Roof Opening Sq.*
70	16-7/8	4-1/4	27-1/2	36-1/4	2	18	75	13-1/2
90	17-3/8	4-3/4	27-1/2	36-1/4	2	18	80	13-1/2
100	17-3/8	4-3/4	27-1/2	36-1/4	2	18	80	13-1/2
120	22-1/2	5-7/8	29-1/2	37-1/4	2	20	170	15-1/2
135	22-3/4	6-1/8	29-1/2	37-1/4	2	20	170	15-1/2
150	23-7/8	7-1/4	33-1/2	42-1/4	2	24	200	19-1/2
165	24	7-3/8	33-1/2	42-1/4	2	24	200	19-1/2
180	28-3/8	8-1/4	39-5/8	51-1/2	3	30	240	25-1/2

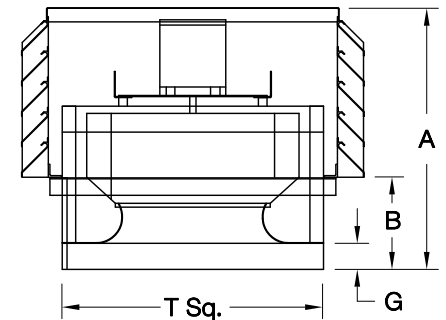
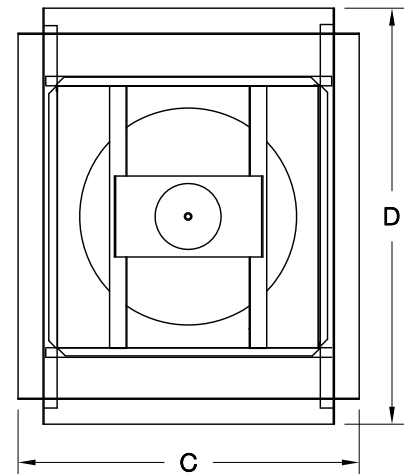
ALL DIMENSIONS IN INCHES. WEIGHTS IN LBS.
 * ROOF OPENING SIZE FOR CURBS SUPPLIED BY COOK ONLY.

STANDARD CONSTRUCTION FEATURES:

All aluminum housing – Extruded aluminum tiers – Backward inclined all aluminum wheel – Welded curb cap corners – Removable top cap – Birdscreen – Vibration isolators – Permanently lubricated ball bearing motors – Corrosion resistant fasteners.

ACCESSORIES

1. DISCONNECT SWITCH
2. FAN SPEED CONTROL
3. GRAVITY BACKDRAFT DAMPER
4. MOTORIZED BACKDRAFT DAMPER
5. RCG GALVANIZED CURB
6. RCA ALUMINUM CURB
7. EPOXY COATING
8. ANTI-CONDENSATE COATING
9. LESS BIRDSCREEN
10. SPECIAL



QTY	MARK	CATALOG NUMBER	FAN INFORMATION			MOTOR INFORMATION					ACCESSORIES							
			CFM	SP	RPM	HP	VOLTS	HZ	PH	TYPE								

MOTOR TYPE: ODP (OPEN DRIP-PROOF); 2 SP (2 SPEED); X-PRF (EXPLOSION PROOF); TEFC (TOTALLY ENCLOSED FAN COOLED).

LC004R01