



COOK

HXSM

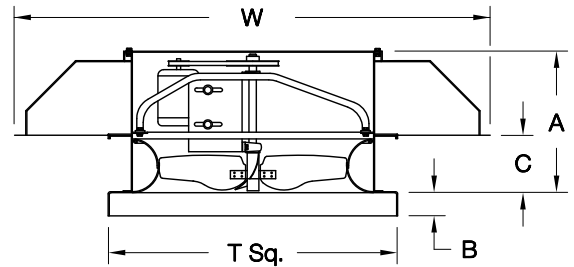
DATE: _____
 PROJECT: _____
 LOCATION: _____



**Hooded Supply Ventilator
 Medium-Pressure Steel Propeller
 Roof Mounted/Belt Drive**

DIMENSION DATA

Size	A	B	C	L x W	T Sq.	Material Ga.		Max. Motor Frame	Roof Opening Sq.*	Ship Wt.
						Base	Hood			
20	27-1/4	2	10	52 x 52	32	14	18	145T	27-1/2	400
24	28-3/4	3	10	59 x 59	36	14	18	182T	31-1/2	480
30	30-1/2	3	10	69 x 69	42	14	18	184T	37-1/2	560
36	33	3	10	80 x 80	48	14	18	215T	43-1/2	780
42	38	3	10	90 x 90	54	14	18	215T	49-1/2	1020
48	41-1/2	3	13-1/2	110 x 90	60	14	18	254T	55-1/2	1110
54	44-1/2	3	14-3/4	111 x 109	66	14	18	256T	61-1/2	1235
60	44-1/2	3	14-3/4	121 x 119	72	14	18	256T	67-1/2	1550



ALL DIMENSIONS IN INCHES. WEIGHTS IN LBS., LESS MOTOR.
 * ROOF OPENING SIZE FOR CURBS SUPPLIED BY COOK ONLY.

STANDARD CONSTRUCTION FEATURES:

X-stream steel propeller – Spun steel Venturi/curb cap – Lorenized steel lower housing – Galvanized steel hood – Birdscreen – Heavy duty steel power assembly – Welded curb cap corners – Adjustable pitch drives through 5 hp motor – Regreasable bearings in cast housing rated at 200,000 hours average life – Propellers are statically and dynamically balanced – Corrosion resistant fasteners – Oil and heat resistant, static conducting belts – All fans factory adjusted to specified RPM.

NOTE:
 Sizes 42–60 require field assembly of hood.

ACCESSORIES

1. DISCONNECT SWITCH
2. GRAVITY INTAKE DAMPER
3. MOTORIZED INTAKE DAMPER
4. RCG GALVANIZED CURB
5. RCA ALUMINUM CURB
6. ALUMINUM HOOD
7. EPOXY COATING

QTY	MARK	CATALOG NUMBER	FAN INFORMATION			MOTOR INFORMATION					ACCESSORIES								
			CFM	SP	RPM	HP	VOLTS	HZ	PH	TYPE									

LARGEST MOTOR SHIPPED MOUNTED: ODP (OPEN DRIP-PROOF) 5 HP; 2 SP (2 SPEED) 1-1/2 HP;
 X-PRF (EXPLOSION PROOF) 1-1/2 HP; TEFC (TOTALLY ENCLOSED FAN COOLED) 1-1/2 HP.

RP064R02