



COOK

HXFL

DATE: _____

PROJECT: _____

LOCATION: _____

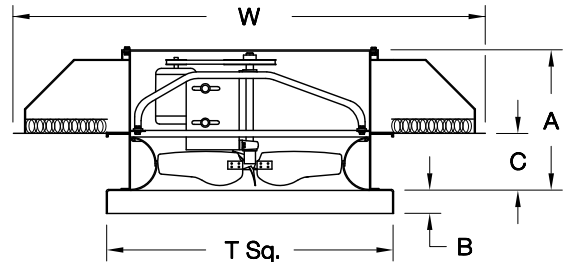


Hooded Filtered Supply Ventilator Low-Pressure Steel Propeller Roof Mounted/Belt Drive

DIMENSION DATA

Size	A	B	C	L x W	T Sq.	Material Ga.		Max Mtr Frame	Roof Opening Sq.*	Ship Wt.
						Base	Hood			
20	28-3/4	2	10	59 x 59	32	14	18	145T	27-1/2	450
24	30-1/2	3	10	69 x 69	36	14	18	182T	31-1/2	525
30	33	3	10	80 x 80	42	14	18	184T	37-1/2	610
36	38	3	10	90 x 90	48	14	18	215T	43-1/2	840
42	41-1/2	3	13-1/2	110 x 90	54	14	18	215T	49-1/2	1100
48	44-1/2	3	14-3/4	111 x 109	60	14	18	254T	55-1/2	1200
54	44-1/2	3	14-3/4	121 x 119	66	14	18	256T	61-1/2	1345
60	44-1/2	3	14-3/4	146 x 119	72	14	18	256T	67-1/2	1700

ALL DIMENSIONS IN INCHES. WEIGHTS IN LBS., LESS MOTOR.
* ROOF OPENING SIZE FOR CURBS SUPPLIED BY COOK ONLY.



STANDARD CONSTRUCTION FEATURES:

X-stream steel propeller - Spun steel Venturi/curb cap - Lorenized steel lower housing - Galvanized steel hood - Heavy duty steel power assembly - Welded curb cap corners - Adjustable pitch drives through 5 hp motor - Regreasable bearings in cast housing rated at 200,000 hours average life - Propellers are statically and dynamically balanced - Washable filters - Quick release filter retainers - Corrosion resistant fasteners - Static resistant belts - All fans factory adjusted to specified RPM.

NOTE:

Sizes 36-60 require field assembly of hood.

ACCESSORIES

1. DISCONNECT SWITCH
2. GRAVITY INTAKE DAMPER
3. MOTORIZED INTAKE DAMPER
4. RCG GALVANIZED CURB
5. RCA ALUMINUM CURB
6. ALUMINUM HOOD
7. EPOXY COATING
8. FIBERGLASS FILTER MEDIA
9. POLYESTER FILTER MEDIA
10. SPECIAL

QTY	MARK	CATALOG NUMBER	FAN INFORMATION			MOTOR INFORMATION					ACCESSORIES							
			CFM	SP	RPM	HP	VOLTS	HZ	PH	TYPE								

LARGEST MOTOR SHIPPED MOUNTED: ODP (OPEN DRIP-PROOF) 5 HP; 2 SP (2 SPEED) 1-1/2 HP;
X-PRF (EXPLOSION PROOF) 1-1/2 HP; TEFC (TOTALLY ENCLOSED FAN COOLED) 1-1/2 HP.

RP065R02