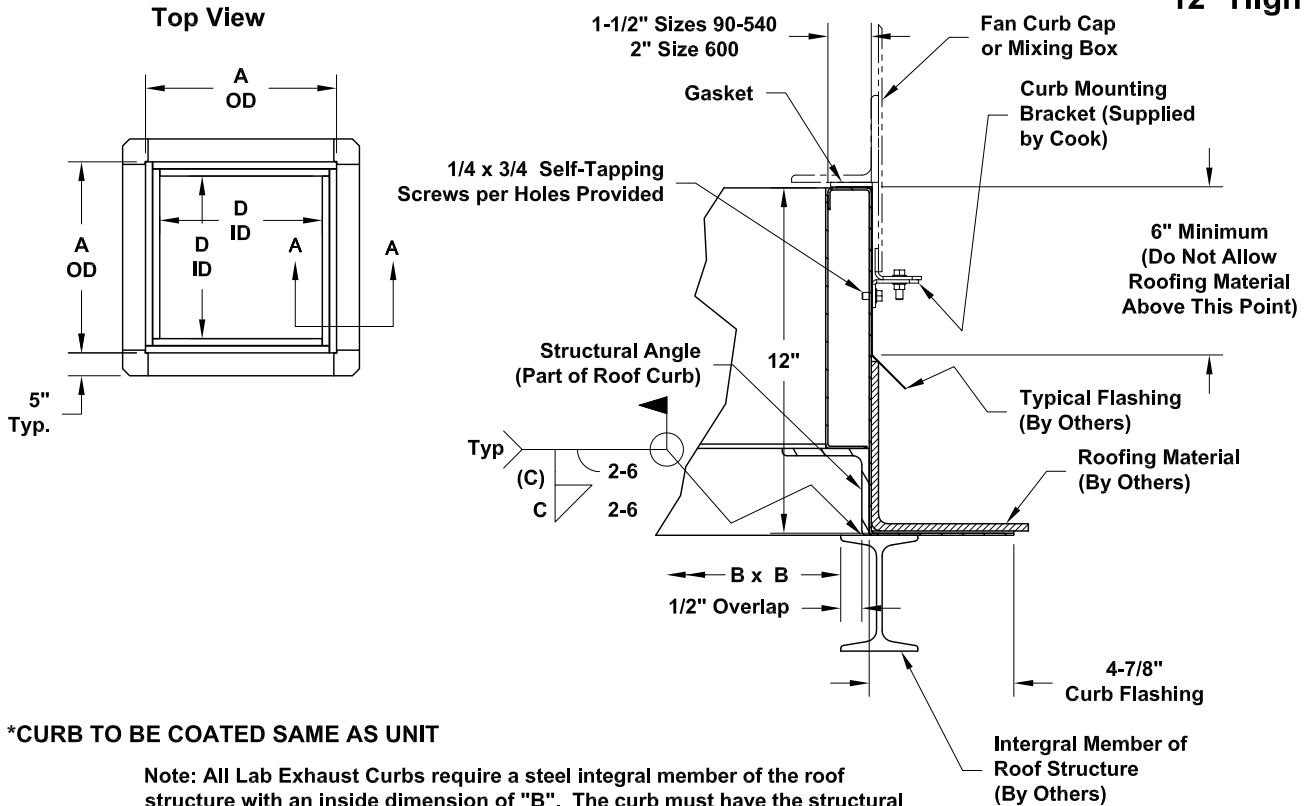




DATE: _____
 PROJECT: _____
 LOCATION: _____

Coated Steel Lab Exhauster Curb QMXLE, QMXHPL, QMXVP QMXHPVP, QMXVPA, QMXHPVPA Single (1x1) Configuration 12" High



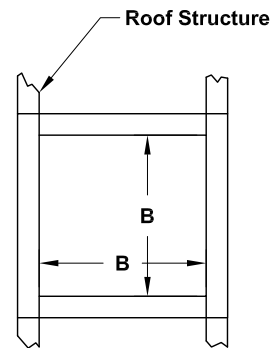
***CURB TO BE COATED SAME AS UNIT**

Note: All Lab Exhaust Curb require a steel integral member of the roof structure with an inside dimension of "B". The curb must have the structural angle field welded to the steel roof structure. Steel roof structure to be determined by the engineer of record.

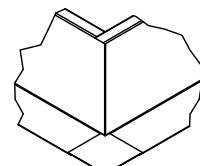
DIMENSION DATA

Size	A	B	C	D	Curb Gauge	Approx. Curb Wt.
90	27-3/16	25-1/2	1/4	21	12	172
120	27-3/16	25-1/2	1/4	21	12	172
135	27-1/8	25-7/16	1/4	20-15/16	12	171
150	29-1/8	27-7/16	1/4	22-15/16	12	184
165	31-1/8	29-7/16	1/4	24-15/16	12	196
180	33-1/8	31-7/16	1/4	26-15/16	12	209
202	36-15/16	35-1/4	1/4	30-3/4	12	233
225	40-15/16	39-1/4	1/4	34-3/4	12	258
245	42-15/16	41-1/4	1/4	36-3/4	12	270
270	46-15/16	45-1/4	1/4	40-3/4	12	296
300	50-15/16	49-1/4	1/4	44-3/4	12	320
330	54-13/16	53-1/8	1/4	48-5/8	12	345
365	60-3/4	59-1/16	1/4	54-9/16	12	383
402	65-5/8	63-15/16	1/4	59-7/16	12	412
445	72-5/8	70-15/16	1/4	66-7/16	12	456
490	78-1/2	76-1/2	3/8	72-1/4	10	657
540	85-3/8	83-3/8	3/8	79-1/8	10	714
600	94-3/8	92-1/4	3/8	88	7	976

ALL DIMENSIONS IN INCHES. WEIGHTS IN LBS.,



Roof Opening



Curb Corner