



COOK

Stack Extension

DATE: _____

PROJECT: _____

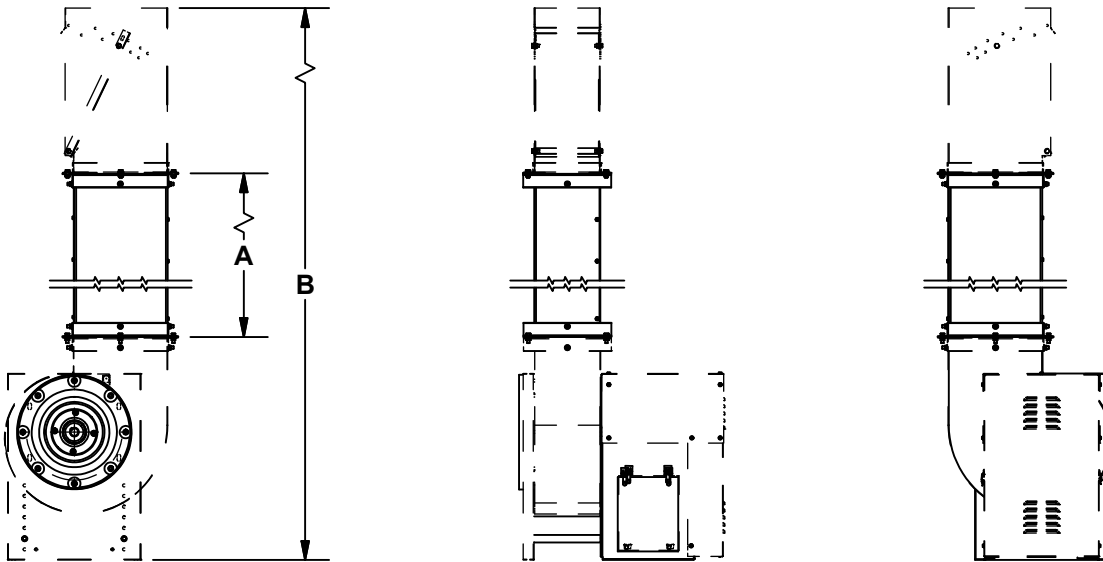
LOCATION: _____

Accessory Data Sheet

CPSLE-S & CPSALE-S

Upblast

Class I & II



Standard Construction Features:

Corrosion resistant aluminum construction, Designed to withstand 125 mph wind without the need for guy wires *, Stainless Steel Fasteners.

*Wind Rating Dependant on Adequate Mounting Structure

DIMENSION DATA

Size	A CL-I	A CL-II	B	UNIT WT. CL I	UNIT WT. CL II
100	35 1/8	n/a	120	48	n/a
120	32 11/16	30 11/16	120	55	53
135	31	57 15/16	120	42	43
150	57 15/16	55	120	48	47
165	53 5/8	50 1/16	120	50	48
180	48 3/8	46 7/16	120	51	49
195	44 5/16	43 3/4	120	52	51
210	37 15/16	37 15/16	120	51	51
225	33	33	120	49	49
245	27 7/16	27 7/16	120	52	52
270	19 3/8	19 3/8	120	49	49
300	9 1/4	9 1/4	120	43	43
330	n/a	n/a	121	n/a	n/a
365	n/a	n/a	133	n/a	n/a

ALL DIMENSIONS IN INCHES. WEIGHTS IN LBS., LESS MOTOR.

X0711R00