



COOK

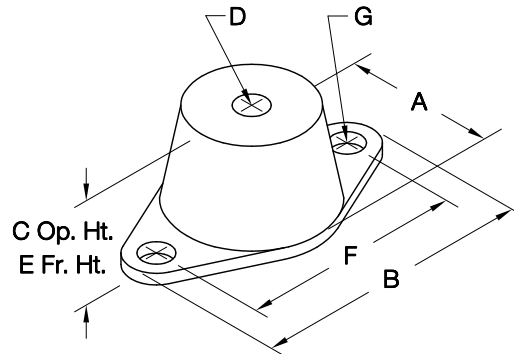
RIS FLOOR

DATE: _____

PROJECT: _____

LOCATION: _____

**Rubber-In-Shear
Isolator
Floor Mounted**



DIMENSION DATA

Model	Manuf	Manuf Model	Rated Load	Rated Deflect	A	B	C	D	E	F	G	Ship Wt.
RF-55	KNC	RDA-55	55	.40	1-13/16	3-3/16	1-7/64	5/16 UNC	1-1/2	2-3/8	11/32	1
RF-120	KNC	RDB-120	120	.50	2-3/8	3-7/8	1-1/4	3/8 UNC	1-3/4	3	11/32	1
RF-220	KNC	RDB-220	220	.50	2-3/8	3-7/8	1-1/4	3/8 UNC	1-3/4	3	11/32	1
RF-375	KNC	RDB-375	375	.50	2-3/8	3-7/8	1-1/4	3/8 UNC	1-3/4	3	11/32	1
RF-600	KNC	RDC-600	600	.50	3-1/4	5-1/2	2	1/2 UNC	2-1/2	4-1/8	9/16	2
RF-1100	KNC	RDC-1100	1100	.50	3-1/4	5-1/2	2	1/2 UNC	2-1/2	4-1/8	9/16	2
RF-2250	KNC	RDD-2250	2250	.50	4-1/4	6-1/2	2-3/8	1/2 UNC	2-7/8	5	9/16	4

ALL DIMENSIONS IN INCHES. ALL WEIGHTS IN LBS.