

# CPSLE

*Highly Configurable Lab Exhaust Solution*



CPSLE is the “multi-tool” of lab exhaust fans. This one economical lab fan can be configured in a wide variety of ways to meet the demanding requirements of your lab!

## Configurable Options

- ▶ Side Intake
- ▶ Bottom Intake with “Low Loss” inlet box
- ▶ Curb or Rail Mount
- ▶ Variable Discharge Nozzle
- ▶ With or Without Stack
- ▶ Flat Blade Wheel (CPSLE) or Airfoil Blade Wheel (CPSALE)

**Rail-Mount  
Side Intake**



**Curb Mount with Low Loss Inlet Box**

## Rail Mount Standard Features:

- ▶ 17 Sizes from 60 - 365
- ▶ Phenolic Epoxy Coating
- ▶ Up to 40,000 CFM & up to 8” SP
- ▶ Stainless Hardware
- ▶ Drain Fitting
- ▶ AMCA Air and Sound Certified
- ▶ 125 MPH Wind Rated Without Guy Wires

## Curb Mounted Standard Features:

- ▶ 13 Sizes from 60 - 245
- ▶ Phenolic Epoxy Coating
- ▶ Up to 14,200 CFM & up to 5.5” SP
- ▶ Stainless Hardware
- ▶ Drain Fitting
- ▶ AMCA Air and Sound Certified
- ▶ 125 MPH Wind Rated Without Guy Wires

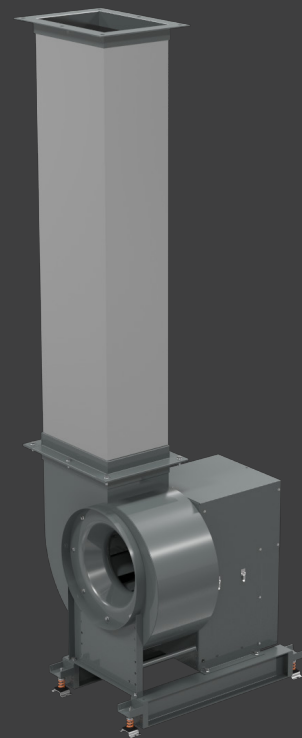


Contact your Cook representative or visit [lorencook.com](http://lorencook.com) for more information!

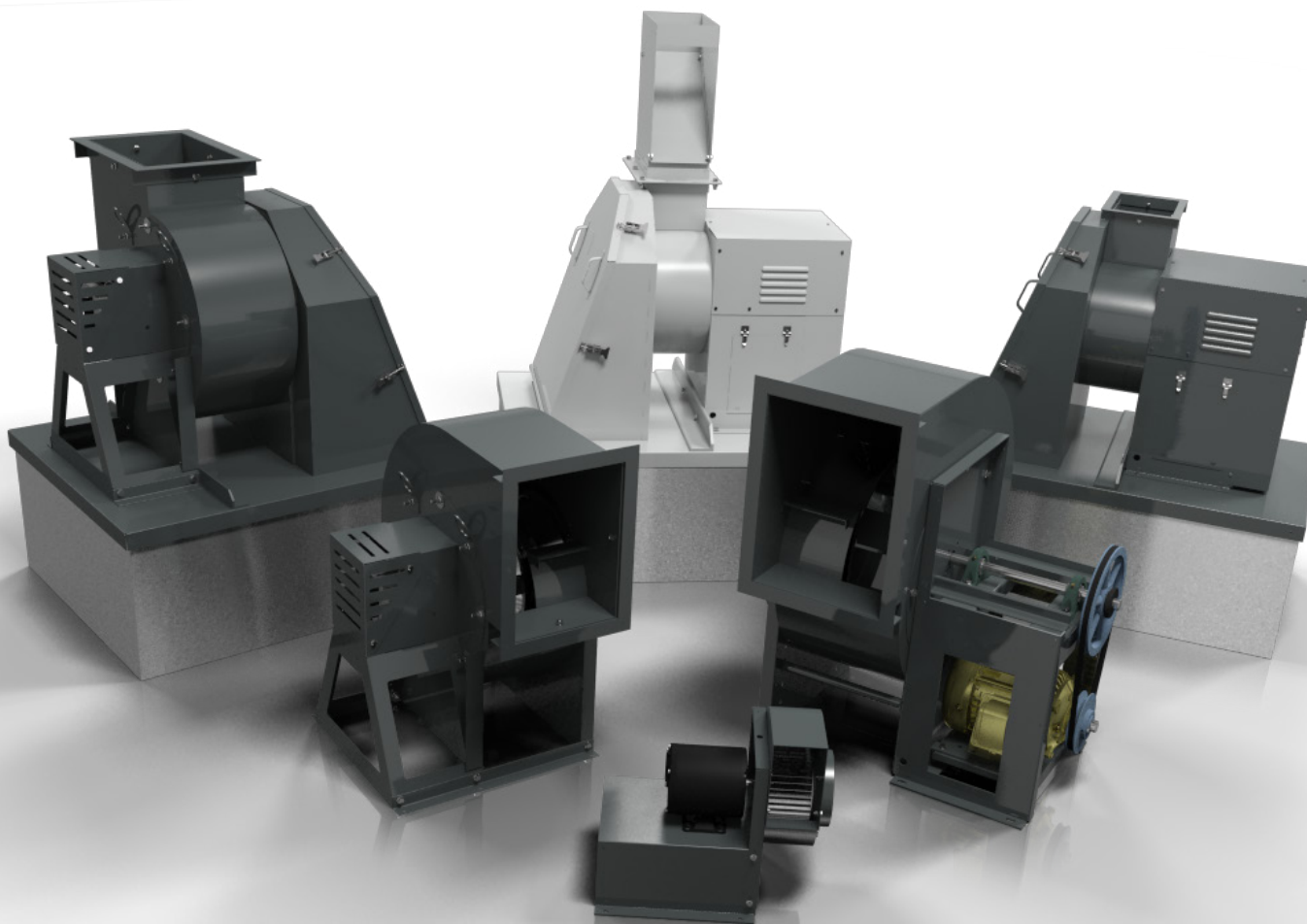
# Stacks for Non-Lab Applications

When phenolic epoxy coating and stainless steel fasteners is unnecessary, but prevention of exhaust air recirculation is required. Check out CPV/CPS/CPA with stacks!

Available up to size 365.



CP's are available in many different configurations to fit your systems needs!



Contact your Cook representative or visit [lorencook.com](http://lorencook.com) for more information!  
2015 E. Dale St. Springfield, MO 65803 | 417-869-6474 | [lorencook.com](http://lorencook.com)

May 2019  
B50100-002